

**SCIENTIS SOLUTIONS**  
Connecting Networks



Network Management Software Solutions  
**Integrated OSS & NMS**

**Scientis Solutions Limited** provides multi-vendor and technology, end-to-end network element and data connectivity monitoring platforms, together with a range of Network Management System integration possibilities. We have developed cost effective end-to-end solutions and a complementary services portfolio, enabling our clients to have complete visibility and control of their networks, improved detection of network failures and reduced repair times, while significantly reducing operational expenditure. From various types of site monitoring and control solutions, through to integration into existing NMS/EMS platforms, Scientis Solutions provides a comprehensive multi-vendor and technology proposition.

## Integrated Network Management Solution

With CygNet carrier grade integrated network management solution, our clients business can quickly and easily monitor their network and proactively ensure systems and service availability to their customers, employees and partners. Our Integrated Network Management solution is available in various configurations and optional plug-ins, with a view to offer our clients the choice of "Grow as the Network Grows". The key philosophy here is that the client can choose a plain configuration which offers real-time monitoring to start with, and progressively upgrade to a full-featured, standards compliant telecommunication Operations Support System (OSS). Our solution delivers a robust, carrier-grade and highly available management system for a wide range of network devices and systems.

## Solutions Approach

Telecom Service Provider will always expect the integrated NMS to allow him to accelerate time-to-market of new enhanced network-based services with lower costs for capital, management, and maintenance. A Managed Services Provider will expect the NMS to allow him minimize the SLA violations and improve customer experience. For a Large Enterprise like Defense, Banking or Enterprise, the NMS should provide a single point of administration to ease the deployment of their I.T. or security policy and consistently enforce it, while decreasing management costs. For a Network Equipment Vendor, in addition to managing the above expectations of the network user he also has to account for the convergence of voice/data, fixed/wireless technologies and provide an EMS that will have up-to-date network management capabilities.

## CygNet Lite

An entry-level network-monitoring tool from the CygNet product suite. Offers real-time monitoring and basic Fault, Configuration and Performance management functions. Some of the most prominent features of CygNet Lite Network Management System:

- ✓ Web-based GUI
- ✓ Database Integration
- ✓ Auto-discovery of devices/topology
- ✓ SNMP MIB Browser
- ✓ Event screens, filters, alerts and thresholds
- ✓ TMF Compliant Southbound Interface

## CygNet Network Management System

The CygNet Network Management System offers the next level of network management capabilities required from an enterprise class network management system over and above what is available from CygNetLite. An upgrade path is available from CygNet Lite to the CygNet Network Management System. some of the most prominent features of CygNet Integrated Network Management System:

- ✓ Zonal/geography based management
- ✓ Fault Log Analyzers
- ✓ Interface Analysis Discovery Reports
- ✓ Historical Reports
- ✓ TMF Compliant Northbound Interface

## CygNet Integrated Data Network Management System

CygNet Data INMS offers full fledged management of an end-to-end data network, with management support for various data network devices like routers, switches, hubs, remote access servers, etc.. Some of the most prominent features of the CygNet Data Integrated Network Management System:

- ✓ WAN Link Analysis
- ✓ Application Discovery
- ✓ Router OSPF/BGP Views/Broadcast storms
- ✓ RAS Views SLA Management
- ✓ Real-time port view of switches

## Overview

### CygNet Integrated Telecom Access Network Management System

The CygNet Telecom Access Integrated Network Management System is a value added plugin for the CygNet Network Management System. This module offers full-featured management capabilities for telecommunication access network elements like corDECT WLL, Broadband DLC's, Narrowband DLC's, Direct Internet Access Systems, GSM/CDMA Access Networks etc.

### CygNet Integrated Telecom Switching Network Management System

The CygNet Integrated Telecom Switching Network Management System offers the range of management features required to manage a typical telecommunication-switching network. The management capabilities for Wireline, GSM and CDMA Switching equipment are included in this module.

### CygNet Integrated Telecom Transport Network Management System

CygNet Integrated Telecom Transport Network Management System incorporates management capabilities for the current generation SDH Transport Networks. The current offerings include multiple platform support for equipment from vendors like Tellabs, Marconi, Tejas Networks, ECI, NEC, Alcatel, Fibcom. We have provided Fault Management, Performance Management, Impact Analysis, Domain Partitioning, Root Cause analysis.

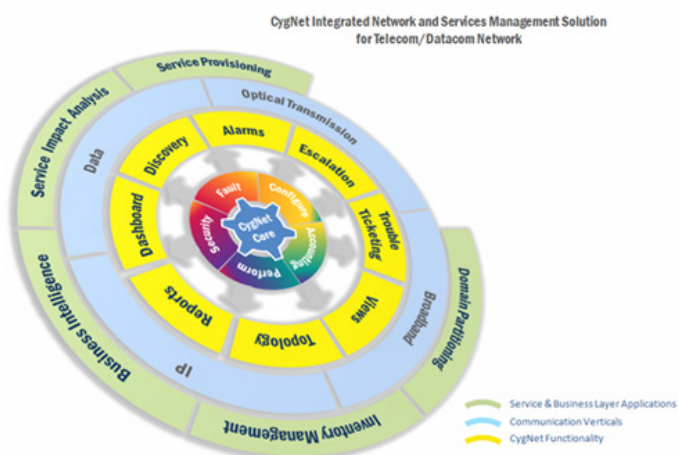
### CygNet Advanced Integrated Network Management System

The CygNet Advanced Integrated Network Management System is the top-level, carrier class offering from the CygNet product suite. This is best deployed with either one or all the telecom modules of the CygNet Integrated Network Management Suite, or over the CygNet Integrated Data Network Management System. This module offers a range of advanced network management and business management features which includes:

- ✓ Trouble Ticketing
- ✓ Root Cause Analysis
- ✓ Fault Control & Correction
- ✓ Consolidated & Vendor Specific Reports
- ✓ Trend Analysis
- ✓ TMF Compliant Northbound Interface for OSS Integration.

### Industry Solution Matrix

The CygNet Framework delivers tightly coupled with out-of-the-box industry-specific products and applications. We extend our expertise through specific customization services to deliver a complete solution for our clients. Thus for our customers, our value proposition is - complete management solution tailor made to specific requirements



CygNet - INTEGRATED NMS SOLUTIONS MATRIX			
Managing From Nodes to Services			
Solution	For Communication Service Provider	For Network Equipment Provider	For Enterprise
Network Layer Framework	CygNet Core	CygNet-Lite	CygNet Core
	CygNet-Lite		CygNet-Lite
	Optical Transport		CygNet-Data
	IP / Broadband		
Integration Managers	OSS / J NBI	OSS / J NBI	OSS / J NBI
	TMF 814 NBI	TMF 814 NBI	TMF 814 NBI
	SNMP	SNMP	SNMP
Service/Business Layer Modules	Service Assurance		Business Intelligence
	Business Intelligence		
	Information Portal		
Vertical Specific Services	Custom Development	EMS Development	Custom Development
	3 <sup>rd</sup> Party Integration	3 <sup>rd</sup> Party Integration	3 <sup>rd</sup> Party Integration
	Network Audit	Network Audit	Network Audit

Scientis Solutions Limited  
Innovation Centre, 49 Oxford Street  
Leicester LE1 5XY, England

Registered in England, no. 6851268  
Email: [sales@scientis.co.uk](mailto:sales@scientis.co.uk)  
Web: <http://www.scientis.co.uk>

**SCIENTIS SOLUTIONS**  
Connecting Networks



© Copyright Scientis Solutions Limited, 2010  
Disclaimer: Information may change without notice