



Network Management System Solutions  
**SNMS – Scientis Network Management System**

**Scientis Solutions Limited** provides multi-vendor and technology, end-to-end network element and data connectivity monitoring platforms, together with a range of Network Management System integration possibilities. We have developed cost effective end-to-end solutions and a complementary services portfolio, enabling our clients to have complete visibility and control of their networks, improved detection of network failures and reduced repair times, while significantly reducing operational expenditure. From various types of site monitoring and control solutions, through to integration into existing NMS/EMS platforms, Scientis Solutions provides a comprehensive multi-vendor and technology proposition.

## SNMS (Scientis Network Management System)

Our SNMS is a multi-vendor and technology network management solution based upon an open network architecture and optimized to meet the tailored requirements of our clients. Our SNMS has an SNMP interface, which not only allows monitoring of other types of SNMP equipment, but also makes it suitable for (northbound) integration to an Umbrella NMS System.

### Fault Management features

A wide range of fault management features are available, including creation of many subnet levels to provide granular element groupings. The active alarm list fully identifies the alarm type, severity, NE and alarm timestamp. Alarm history functions are also available to allow viewing of all historical alarms in the system and with custom filters this can be a key tool in fault tracking and diagnostics.

### Configuration Management features

Utilizes the hardware vendor's LCT software to provide full Configuration Management functions, although customized CM is possible in some cases.

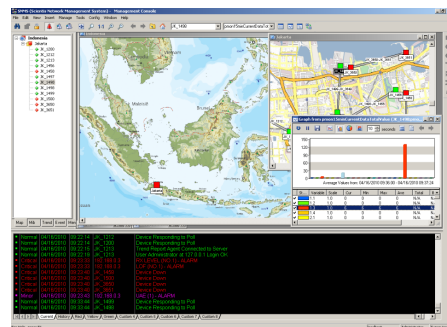
### Performance Management features

Scientis Solutions are SNMP specialists and as such, we are able to offer the most comprehensive Performance Management features available on the market today.

The Scientis Solutions SNMS provides 2 levels of performance management, one being link performance data collection, which can show up to 7 days of data per NE. The other is a more sophisticated performance viewer module (SAPM) enabling users to collect and report performance data and trend reporting analysis in CSV/XML formats. See our software solution brochure.

### Inventory Management features

Our speciality is SNMP products and we are able to offer comprehensive Inventory Management functionality not available on competing solutions. The Scientis Solutions SNMS provides 2 levels of Inventory management, one being inventory management of a vendor equipment for a single NE at a time. The other (SIM) is a more sophisticated inventory collection tool that will collect and report inventory data in CSV, XML or PDF formats. See our software solution brochure.



### Secure

Safely manage devices with SNMP v3 authentication and encryption. Tailor-made views and capabilities for each management user.

### Scalable

Use distributed polling and server components for workgroup, large Intranet or Management Service Provider configurations.

### Accessible

Monitor and manage your network from remote locations with the SNMP Windows client and Java Web consoles.

### Integrated

Automatically export map topology, trend statistics and event log entries to industry standard databases.

### Multi-Vendor

View and modify standard and private information on routers, microwave radio equipment and other devices from any SNMP enabled equipment vendor.

### Customizable

Simplify tasks with custom Expressions, Data Tables, and Menus. Develop Graphical Device Views with the BitView scripting tool and a variety of programming and scripting interfaces.

## Technical Specification

### SNMP Protocols

V1, V2, V3 with SHA/MD5 Authentication and DES Encryption.

### Service Discovery

Performs service discovery on each device, including SNMP, ICMP, Telnet, FTP, HTTP, SMTP and four user specified TCP ports.

### Event Notification

Ignore, Ignore Duplicates, Forward, Email, SMS, Display Alarm Box or Execute Application.

### Topology Layout

Multiple Level Hierarchies, Segmented by Polling Agent, Tree Ring or Snaked Bus networks.

### Device Discovery

Automatically discovers and polls SNMP and ICMP (PING) devices.

### Reporting

Graph, Bar Chart, Distribution and Summary. Printed and Web Export.

### Backup

Live/Standby server support with automated failover.

### External Interfaces

ODBC and Text Export. Event Forwarding using SNMP Traps.

### Customization

Private MIB Import. Custom Tables, Expressions and Menus. Execute applications from map double-click, on event reception and during custom polling.

### Programming Interface

Proprietary object-orientated interface for C/C++ applications, SNMP 4.0 DDE Interface. WinSNMP de facto standard interface. Utilities for Scripting Language support.

### Synchronisation

The Scientis Solutions SNMS platform incorporates powerful synchronisation functionality to ensure that the centralised SNMS Database is always aligned with the contents of the Network Element MIBs and local NE data storage. This is particularly important for fault management in the scenario where a specific NE loses DCN connectivity with the SNMS for a period of time, and by employing synchronisation techniques, the system is able to recover from such events.

### Scalability

The Scientis Solutions SNMS presently supports up to 8000 Network Elements and 10 Remote Clients per server as standard. The system is able to scale to meet the demands of national or international networks consisting of ten of thousands of Network Elements simply by adding additional servers.

Server Hardware Requirement	
Parameter	SNMS /SEMS
CPU	Intel Core Duo 2.6 GHz
Memory	8 GB
Disk	250 GB
Operating System	Windows Vista, 2003, XP, 200, NT

Scientis Solutions Limited  
Innovation Centre, 49 Oxford Street  
Leicester LE1 5XY, England

Registered in England, no. 6851268  
Email: [sales@scientis.co.uk](mailto:sales@scientis.co.uk)  
Web: <http://www.scientis.co.uk>

**SCIENTIS SOLUTIONS**  
Connecting Networks



© Copyright Scientis Solutions Limited, 2010  
Disclaimer: Information may change without notice